

C A T A L O G U E



Your Trusted Partner
for **High Quality**
Rubber Mats

Index

1. About Us	3-7
2. Recommended Mats	8-9
A. General Purpose Flooring	10
Carpet Mat	
≡ Rubberised Carpet Roll	
Rubber Backed Waterhog Mat	
≡ Rubber Backed Olefin Mat	
Rubber Backed Loop Pile Mat	
≡ Octagonal Mat	
Wave Mat	
≡ Finger Tip Mat	
Ridge Scrapper Mat	
≡ Criss Cross Scrapper Mat	
Hollow Rubber Mat	
B. Kitchen and Industrial Mat	17
Oil Resistant Bevelled Edge Mat	
Rubber Bevelled Edge Anti Fatigue Mat	
≡ Oil Resistant Rubber Restaurant Mat	
Restaurant Rubber Mat	
≡ Oil Resistant Straight Edge Mat	
Rubber Straight Edge Anti Fatigue Mat	
≡ Rubber Diamond Modular Mat	
Rubber Solid Top Mat	
≡ Industrial Runner Mats	
Rubber Bubble Mat	
≡ Rubber Car Mat	
Excavator Stabiliser Rubber Pad	
C. Dairy and Equine Flooring	24
Hexagonal Top Cow Mat	
≡ Chequered Top Cow Mat	
Hammered top with Honeycomb Bottom	
≡ Rubber Horse Walker Tiles	
Mini Hexagonal Mat	
≡ Mini chequered Top Mat	
Coin Top Mat	
Hammered Top Stable Mat	
≡ Amoebic Top Stable Mat	
Bubble Top stable Mat	
≡ Rubber Slat Mat	
D. Gym and Sports Flooring	31
Mini Power Gym Tiles	
≡ Coin Top Gym Mat	
Interlocking Gym Tiles	
Rhino Tile Gym Mat	
≡ Rubber Crumb Tiles	
Solid Top Gym Mat	
E. Entrance Flooring	35
Polypropylene Mat	
≡ Rubber Brush Mat	
Rubber Grill Mat	
Rubber Shoe Pin Mat	
≡ Rubber Eye Pin Mat	
Rubber Ramp Mat	

About Us



Welcome to Vikas Rubbers, a globally recognized manufacturer and exporter of premium quality rubber mats . Since our inception in 1977, we have established ourselves as a trusted name in the international flooring market, known for our exceptional products and unparalleled customer service.

At Vikas Rubbers, we specialize in producing eco-friendly mats that are biodegradable, making them an ideal choice for environmentally conscious customers. Our mats are reasonably priced, providing our customers with an affordable option without compromising on quality.

Our state-of-the-art manufacturing facilities have a production capacity of 25 tonnes per day, enabling us to meet the growing demand for our products. With our efficient technologies and over four decades of experience in the production of rubber mats, we can expand our services beyond geographical boundaries. Our manufacturing premises in Kottayam have export connections to various countries such as the UK, the USA, Germany, Italy, and Ireland, among others.

At Vikas Rubbers, we are committed to exceeding our customers' expectations by providing them with high-quality rubber mats. We take great pride in our ability to meet the diverse needs of our customers in various industries. Our dedication to delivering top-notch products and services helps our customers enhance their flooring experience.

Thank you for choosing Vikas Rubbers. We look forward to working with you and providing you with exceptional products and services.

Customer Portal

We have a dedicated customer portal on our website that is designed for you. It provides a seamless and user friendly experience, allowing our valued customers to access their accounts, place orders, track shipments, download shipping documents and stay up-to-date with our latest product offerings. With a focus on convenience and efficiency, our customer portal is a testament to our commitment to enhancing your experience and ensuring your satisfaction.

Our Capacity

At Vikas Rubbers, we have a remarkable production capacity of 25 tonnes per day, ensuring that we can meet both small and large-scale orders with ease.

Our production capacity includes hydraulic press of sizes 3' x 10' (1nos), 4' x 6' (2 nos), 3' x 5' (3 nos), 4' x 4' (1 nos), 2' x 2' (1nos) allowing us to produce a wide variety of mats in different sizes and shapes.

Our Production Facilities

Dedicated Color Compound Factory: One of our four factories is dedicated to producing colored rubber compounds, offering a wide range of options for your mat customization.



Our Expertise

We pride ourselves on our expertise in manufacturing and exporting rubber mats that cater to a variety of market segments. Whether it's for kitchen, Dairy & Equine Flooring, playground, industrial, commercial, or sports and gym flooring. Vikas Rubbers has the ideal solution to meet your needs. Additionally, we offer custom-made products tailored to your specific requirements, ensuring that you get the perfect mat for your unique application.



Quality Assurance & Research



Quality is at the core of what we do. We maintain in-house testing facilities to ensure that every rubber mat meets the highest standards. Our Quality Assurance Laboratory is equipped with the most advanced and sophisticated testing and measuring instruments to assure material specification, product performance and reliability. The Universal Testing Machine (UTM) for tensile, compression and tear testing and other equipments used for routine tests are Din abrasion tester, Specific gravity balance, Hardness tester, Compression set apparatus etc. Our laboratory technologists and researchers branch their expertise not in just Rubber Technology but also across Plastics and Textile Technology. Our dedicated research team, led by a technical expert, constantly explores new materials and manufacturing techniques to enhance our product offerings.

Certifications

Vikas Rubbers is proud to be an ISO 9001:2015 and ISO 14001:2015 certified company, a testament to our commitment to quality and environmental responsibility.



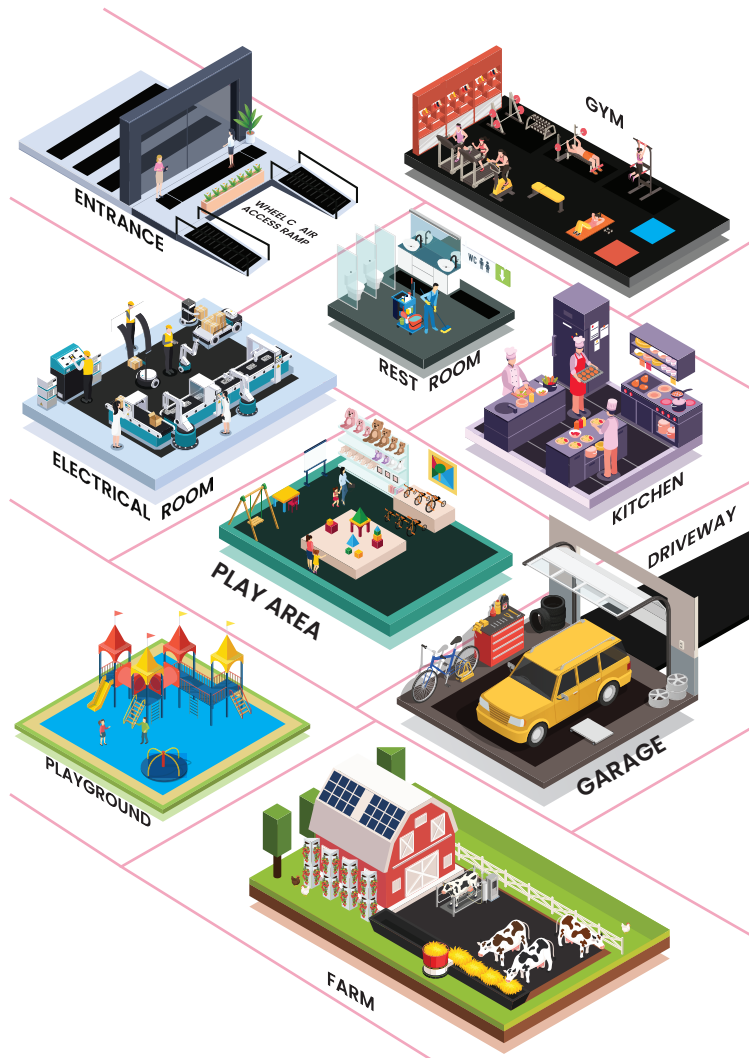
Meet Our Team

Our success is the result of the hard work and dedication of our more than 100 staff members. Their expertise, commitment, and passion are the driving forces behind our exceptional quality rubber mats.

Alone we can do so little
together we can do so much.



RECOMMENDED MATS



ENTRANCE

Level 1 : (Wet area)

- ▮ Rubber Hollow Mat
- ▮ Rubber Bevelled Edge Anti Fatigue Mat
- ▮ Rubber Straight Edge Anti Fatigue Mat
- ▮ Heavy Duty Octagonal Mat

Level 2 : (Dust Scrapping)

- ▮ Criss Cross Scrapper Mat
- ▮ Wave Mat
- ▮ Finger Tip Mat
- ▮ Ridge Scrapper Mat

Level 3

- ▮ Rubberised Carpet Top Mat

RESTROOM

- ▮ Criss Cross Scrapper Mat
- ▮ Rubber Bevelled Edge Anti Fatigue Mat
- ▮ Rubber Straight Edge Anti Fatigue Mat

KITCHEN

- ▮ Rubber Restaurant Mat
- ▮ Rubber Bubble Mat
- ▮ Rubber Bevelled Edge Anti Fatigue Mat
- ▮ Rubber Straight Edge Anti Fatigue Mat

PLAY AREA

- ▮ Outdoor : Rubber Hollow Mat
- ▮ Indoor : Rubber Puzzle Mat

ELECTRICAL ROOM

- ▮ Rubber Bubble Mat

WHEELCHAIR ACCESS MAT

- ▮ Interlocking Mat

GARAGE

- ▮ Diamond Modular Mat
- ▮ Checkered Top Mat
- ▮ Oil Resistant Bevelled Edge Mat
- ▮ Oil Resistant Straight Edge Mat

DRIVEWAY

- ▮ Driveway Industrial Mat

GYM

- ▮ Interlocking Gym Tile
- ▮ Solid top Mat
- ▮ Coin Top Mat
- ▮ Puzzle Mats
- ▮ Reversible Interlocking Mat
- ▮ Rhyno Tiles
- ▮ Mini Power Tiles

FARMING

- ▮ Hexagonal Top Cow Mat
- ▮ Chequered Top Cow Mat
- ▮ Hammered top with Honeycomb Bottom
- ▮ Rubber Slat Mat
- ▮ Mini Hexagonal Mat
- ▮ Mini Chequered Top Mat
- ▮ Coin Top Mat
- ▮ Amoebic Top Stable Mat
- ▮ Bubble Top Stable Mat
- ▮ Hammered Top Stable Mat



General Purpose flooring

Carpet Mat (Polypropelene)

add elegance to your flooring

Product Code : FGP01

Product details

Colour: Custom colours are available

Size: 90 cm x 60 cm

90 x 120 cm

90 x 150 cm

90 x 300 cm

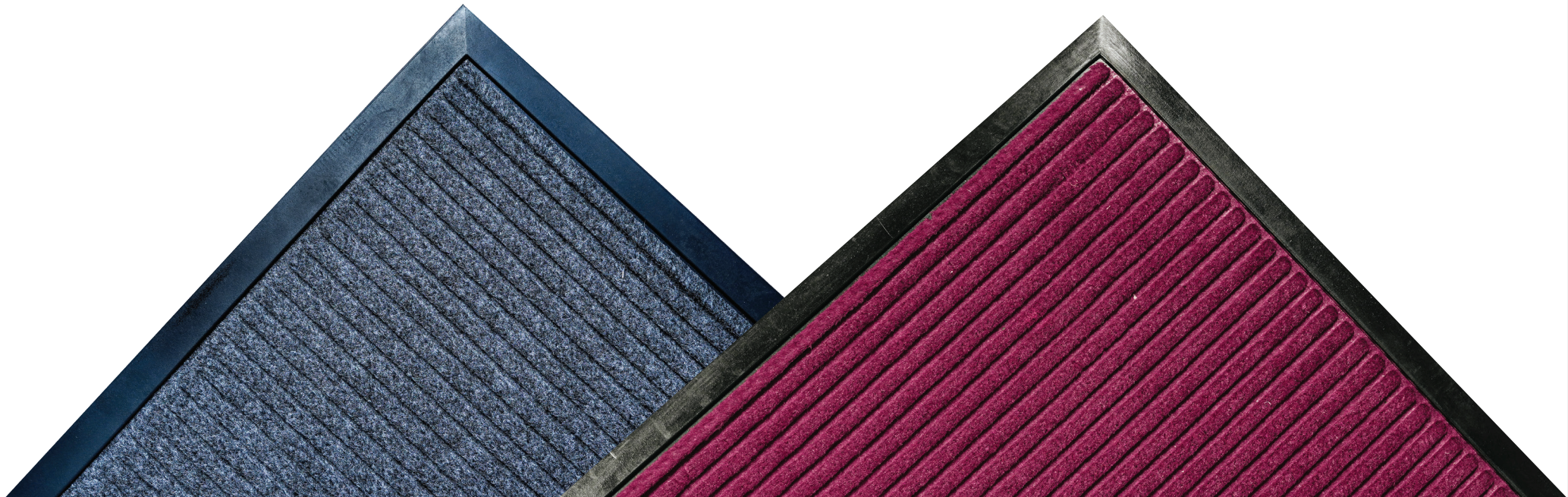
120 x 180 cm

Features

- ≡ High Durability
- ≡ Non-slip backing keeps the mat in place
- ≡ Has got an absorbent surface
- ≡ Easy to clean and maintain
- ≡ Gives elegance to the decor
- ≡ Suitable for all weather types

Application

- ≡ Enhances the aesthetic appeal of the flooring and is suitable for high-traffic areas



Rubberised Carpet Roll

For a clean and smooth surface

Product Code : FGP01A

Product details

Thickness: 8 mm

Size: 1.8m x 20m , 2 m x 20 m

Colors: Custom Colors are available.



Features

- ≡ Continuous Length Rolls
- ≡ Easy Installation
- ≡ Ideal for High Foot Traffic Areas
- ≡ Enhanced Comfort
- ≡ Long-lasting Performance

Application

- ≡ Suitable for Indoor and Commercial Entrances

Rubber Backed Waterhog Mat

Get on your grip

Product Code : FGP01B

Product details

Colour: Custom Colors are available.

Size: 40cm x 60cm, 45cm x 75cm, 60cm x 90cm,
90cm x 120cm, 90cm x 150cm, 90cm x 300 cm,
180cm x 120cm



Features

- ≡ Non-Slip Surface
- ≡ Effective Water and Dirt Trapping
- ≡ Low Maintenance

Application

- ≡ Suitable for Indoor and commercial entrances

Rubber Backed Olefin Mat

For a clean and smooth surface

Product Code : FGP01C

Product details

Thickness: 8 mm

Size: 40cm x 60cm, 45cm x 75cm, 60cm x 90cm,
90cm x 120cm, 90cm x 150cm, 90cm x 300 cm,
180cm x 120cm

Colour: Custom Colors are available.



Features

- ≡ UV-Resistant
- ≡ Fade-Resistant
- ≡ Aggressive Dirt, Water, and Debris Removal

Application

- ≡ Designed for both residential and commercial entryways

Rubber Backed Loop Pile Mat

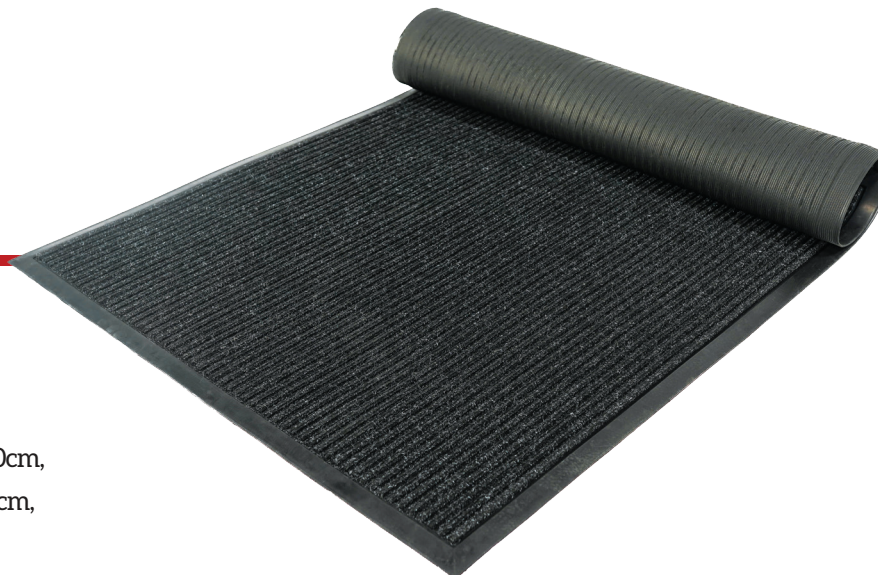
Get on your grip

Product Code : FGP01D

Product details

Colour: Custom Colors are available.

Size: 40cm x 60cm, 45cm x 75cm, 60cm x 90cm,
90cm x 120cm, 90cm x 150cm, 90cm x 300 cm,
180cm x 120cm



Features

- ≡ Low Maintenance
- ≡ Long-lasting Performance
- ≡ Enhanced Comfort
- ≡ Non-Slip Surface

Application

Ideal for both indoor and commercial entry ways

Octagonal Mat

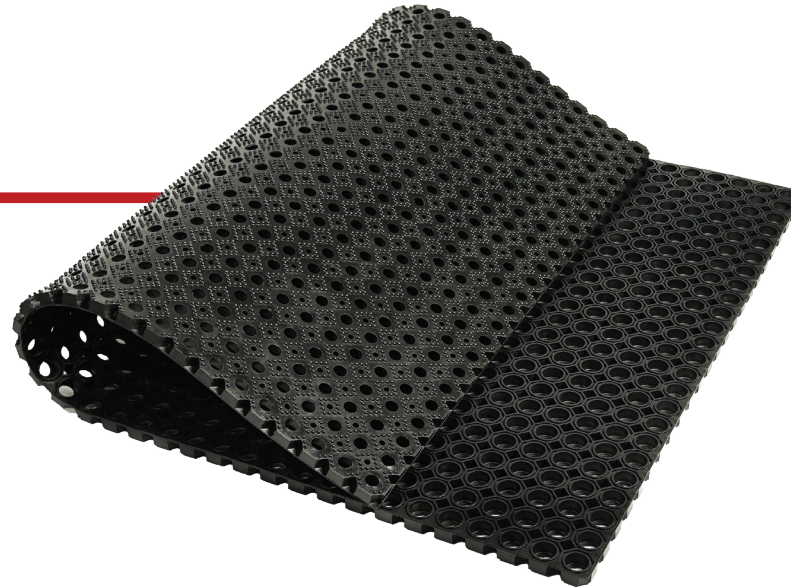
No more dirt and wetness

Product Code : FGP03

Product details

Colour: Black

Size: 40 x 60 x 2.2 cm,
100 x 150 x 2.2 cm



Features

- ≡ Provides slip-free surface
- ≡ Good drainage features
- ≡ High durability and resilience
- ≡ Easy to install and maintain
- ≡ Appropriate for all weather conditions
- ≡ Has the best anti-fatigue properties

Application

- ≡ Wet and snowy areas
- ≡ Ski centres and swimming pools
- ≡ General outdoor entrance matting

Wave Mat

Keep Floors Safe, Clean & Slip-Free

Product Code : FGP04

Product details

Colour: Black

Size: 90cm x 150cm x 1.2cm



Features

- ≡ Keep your floor slip-free
- ≡ Prevent the accumulation of dirt and debris
- ≡ Easy to install and maintain
- ≡ High durability and resilience
- ≡ Has anti-fatigue properties
- ≡ The raised rib assists in scrapping muck and other debris off from shoes to keep them clean

Application

- ≡ Perfect for use in wet outdoor
- ≡ Looks great in commercial and industrial settings

Finger Tip Mat

For a clean and smooth surface

Product Code : FGP05

Product details

Colour : Black

Size: 35 x 60 x 1 cm

40 x 60 x 1 cm

45 x 75 x 1 cm

50 x 100 x 1 cm

60 x 80 x 1.2 cm

60 x 100 x 1.2 cm

80 x 100 x 1.2 cm

91 x 120 x 1.2 cm

91 cm x 152 x 1.2 cm

91 x 183 x 1.2 cm



Features

- ≡ Effectively cleans the soles of shoes
- ≡ The textured surface provides a brushing effect
- ≡ Has got excellent scraping features
- ≡ High durability
- ≡ Slip-resistant backing
- ≡ Easy to clean and manage

Application

- ≡ Suitable for places with heavy foot traffic and is available in a variety of sizes and shapes

Ridge Scrapper Mat

The dirt-free solution for your floors!

Product Code : FGP07

Product details

Colour: Black

Size: 90 x 150 x 1.2 cm



Features

- ≡ Keeps the place dry and clean
- ≡ Easy to install and maintain
- ≡ High durability and resilience
- ≡ Has anti-fatigue properties
- ≡ Fully launderable
- ≡ Oil, grease, and chemical resistant

Application

- ≡ Entrances for outdoor and indoor applications with high foot traffic

Criss Cross Scrapper Mat

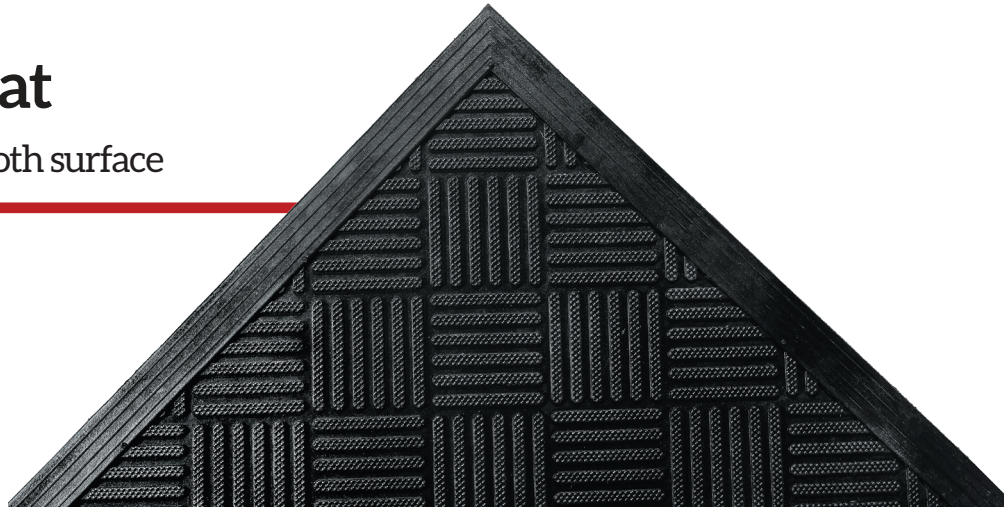
For a clean and smooth surface

Product Code : FGP06

Product details

Colour: Black

Size: 90 × 150 × 1.2cm



Features

- ≡ Keeps the place dry and clean
- ≡ Easy to install and maintain
- ≡ High durability and resilience
- ≡ Has anti-fatigue properties
- ≡ Fully launderable
- ≡ Oil, grease, and chemical resistant

Application

- ≡ Entrances for outdoor and indoor applications with high foot traffic

Hollow Rubber Mat

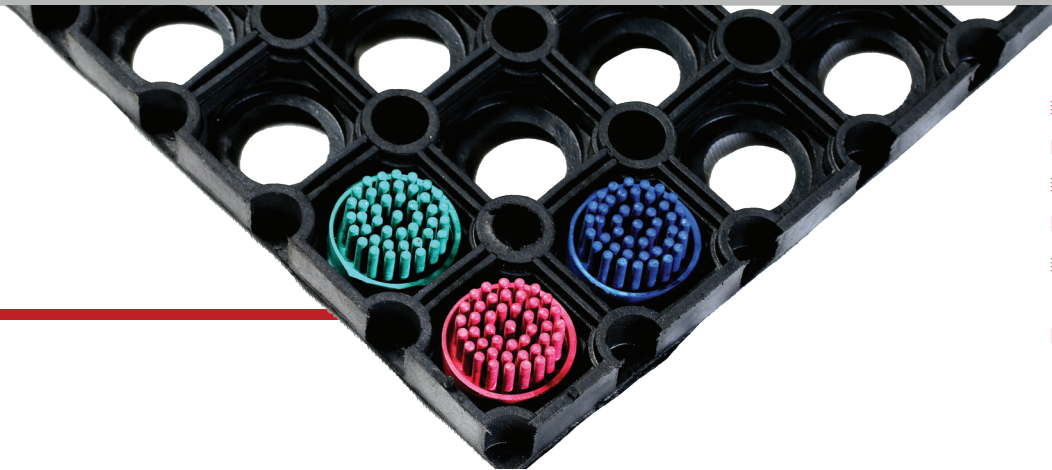
Get on your grip

Product Code : FGP02

Product details

Colour: Black

Size: 40 x 60 x 1.6 cm, 40 x 80 x 1.6 cm, 60 x 80 x 1.6 cm, 50 x 100 x 1.6 cm, 80 x 120 x 1.6 cm, 100 x 100 x 1.6 cm, 100 x 150 x 2.2 cm, 40 x 60 x 2.2cm, 40 x 70 x 2.2, 40 x 80 x 2.2 cm, 50 x 80 x 2.2 cm, 60 x 80 x 2.2 cm, 50 x 100 x 2.2 cm, 80 x 120 x 2.2 cm, 100 x 150 x 2.2 cm 100 x 150 x 5cm



Features

- ≡ Provides the best drainage
- ≡ Easy to install and maintain
- ≡ Highly durable and resilient
- ≡ Appropriate for all weather conditions
- ≡ Connectors are available to cover a large area
- ≡ Plastic pegs are available for fixing the mat to the ground

Application

- ≡ An eco-friendly choice for playground surfacing
- ≡ Outdoor, wet and snowy areas

A person wearing light-colored work pants and dark shoes stands on a dark, textured mat in a workshop. The mat is positioned under a vehicle's engine compartment, which is supported by a blue lift. The mat has a diamond-shaped pattern and is partially covered by a large, semi-transparent grey 'V' shape. The text 'Kitchen and Industrial Mat' is overlaid on the mat in white, bold, serif font.

Kitchen and Industrial Mat

Oil Resistant Bevelled Edge Mat

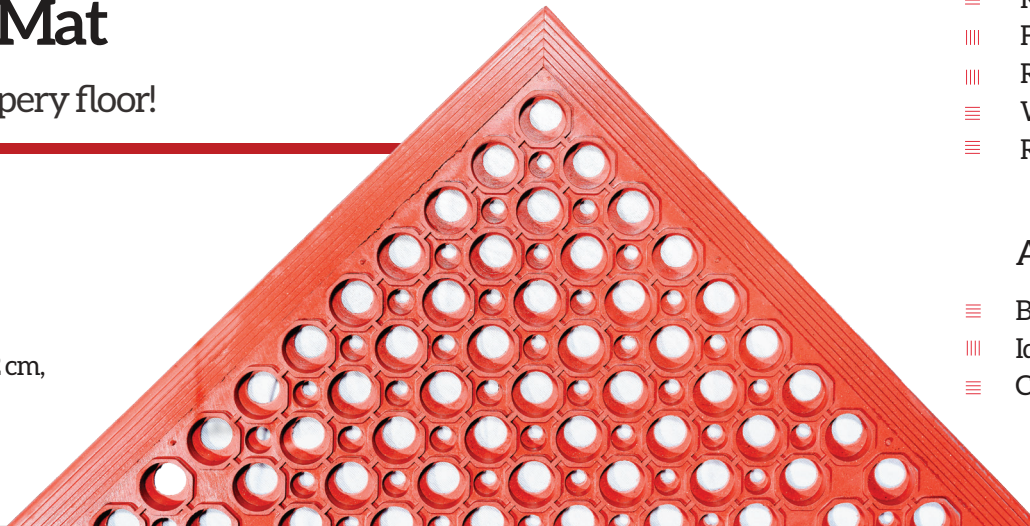
Take a break from the slippery floor!

Product Code : FK102

Product details

Colour: Terracotta Red

Size: 90 x 150 x 1.2cm , 80 x 120 x 1.2 cm,
60 x 90 x 1.2 cm



Features

- ≡ Edges with moulded bevels lessen tripping dangers.
- ≡ Raised circular surface for improved traction.
- ≡ For spilt liquids, open drainage holes.
- ≡ Resistance towards corrosion
- ≡ Wear-resistant
- ≡ Resistance towards impact

Application

- ≡ Best for industrial flooring
- ≡ Ideal for workplace floor covering
- ≡ Can be used both indoors and outdoors

Rubber Bevelled Edge Anti Fatigue Mat

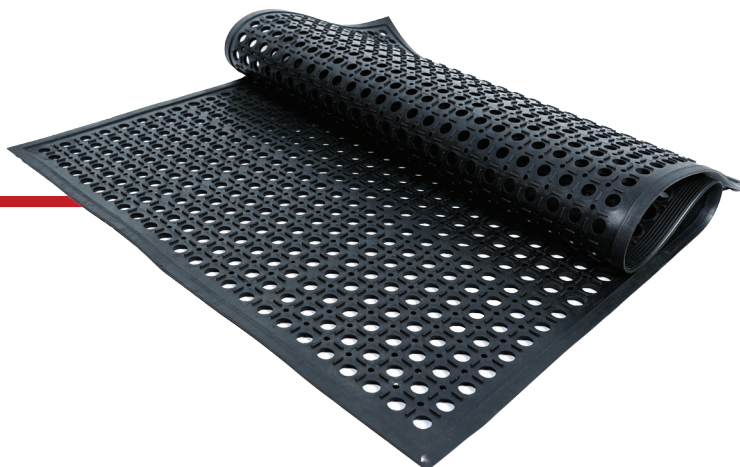
Elevate Comfort, Endure Standing Strain.

Product Code : FK101

Product details

Colour: Black

Size: 90 x 150 x 1.2cm
80 x 120 x 1.2 cm
60 x 90 x 1.2 cm



Features

- ≡ Provides great comfort when standing for a long time
- ≡ Ease pressure on the thighs, ankles, and toes, as well as the tiredness brought on by constant pressure.
- ≡ Long-lasting features
- ≡ For the standing workplace, high rubber composition guarantees anti-fatigue properties.
- ≡ Stimulates and increases blood circulation
- ≡ Impact resistant

Application

- ≡ Ideal for workplaces
- ≡ Suitable for all types of flooring
- ≡ Can be used both indoors and outdoors

Oil Resistant Rubber Restaurant Mat

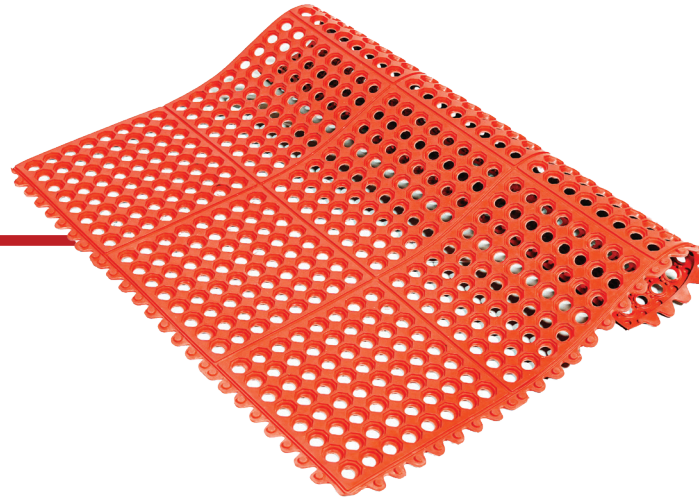
For a smooth and safer workplace

Product Code : FKI05

Product details

Colour : Terracotta Red

Size: 90 x 90 x 1.4 cm, 90 x 90 x 1.2 cm



Features

- ≡ High resistance towards impacts
- ≡ Contains excellent anti-skid properties
- ≡ High resilience towards oils and dirt
- ≡ Highly durable
- ≡ Suitable for all weather types
- ≡ Can be used both indoors and outdoors

Application

- ≡ Suitable for restaurants and goes with any type of kitchen flooring

Restaurant Rubber Mats

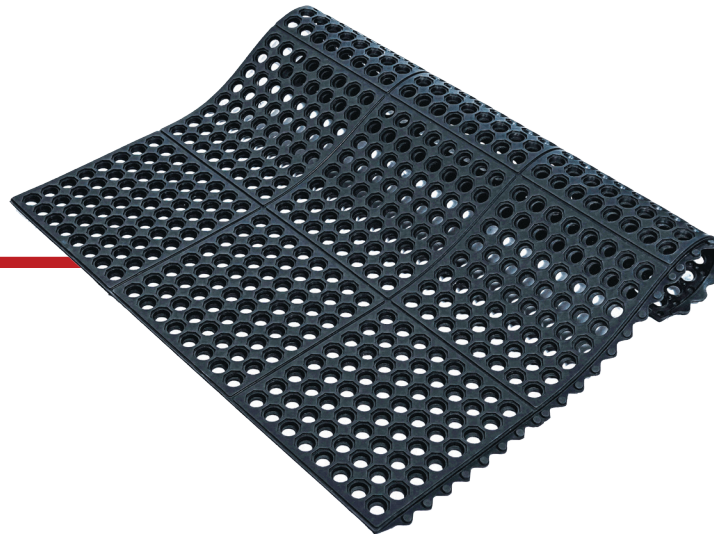
A Damp-free Solution for Restaurants

Product Code : FKI03

Product details

Colour: Black

Size: 90 x 90 x 1.4 cm, 90 x 90 x 1.2 cm



Features

- ≡ Keeps the place dry and clean
- ≡ Easy to maintain and install
- ≡ Provides slip-proof flooring in the kitchen
- ≡ Resists breakage of kitchen appliances due to potential fall
- ≡ High durability and resilience
- ≡ Modular design allows for custom installation

Application

- ≡ Kitchen and bars
- ≡ Home, school, laundry areas, and so on

Oil Resistant Straight Edge Mat

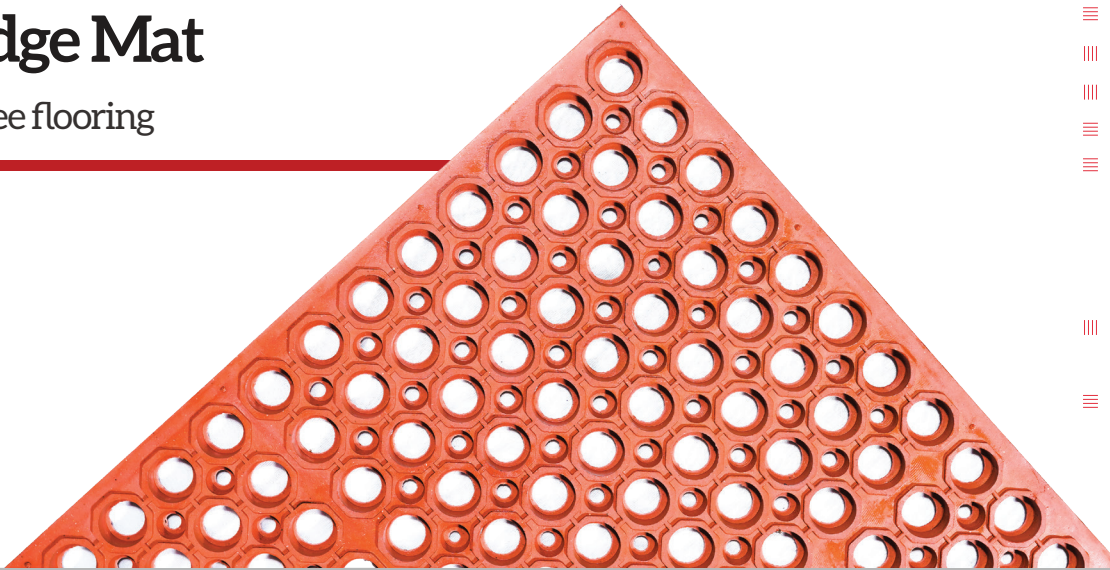
For a clean, slip-free flooring

Product Code : FKI04

Product details

Colour : Terracotta Red

Size: 90 x 150 x 1.6 cm



Features

- ≡ Provides good comfort to the feet
- ≡ Easy to clean
- ≡ Easy to manage
- ≡ High resistance toward oils and dirt
- ≡ Useful in static-sensitive locations
- ≡ Provides a cleaner surface

Application

- ≡ Best for kitchen and home floorings and can be used in workspaces
- ≡ Can be used both indoors and outdoors

Rubber Straight Edge Anti Fatigue Mat

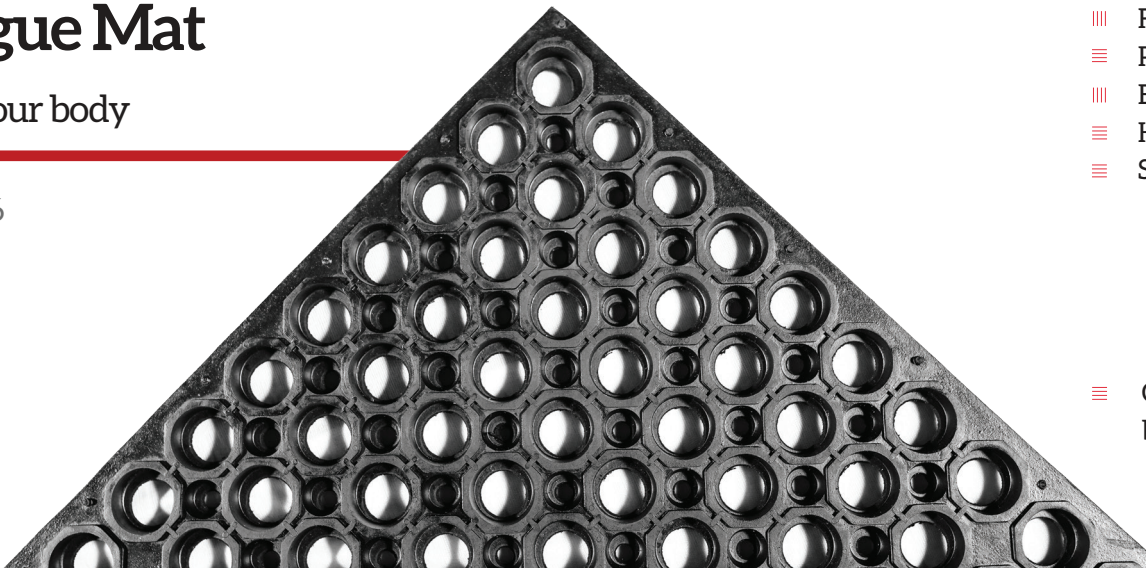
Add comfort to your body

Product Code : FKI06

Product details

Colour: Black

Size: 90 x 150 x 1.6 cm



Features

- ≡ Provides the best anti-fatigue properties
- ≡ Fastly relieves pain
- ≡ Provides great comfort to the body
- ≡ Easy to clean and manage
- ≡ Highly durable
- ≡ Suitable for all weather conditions

Application

- ≡ Can be used on any flooring and is ideal for both home and office space

Industrial Runner Mats

For elegant and safe flooring

Product Code :

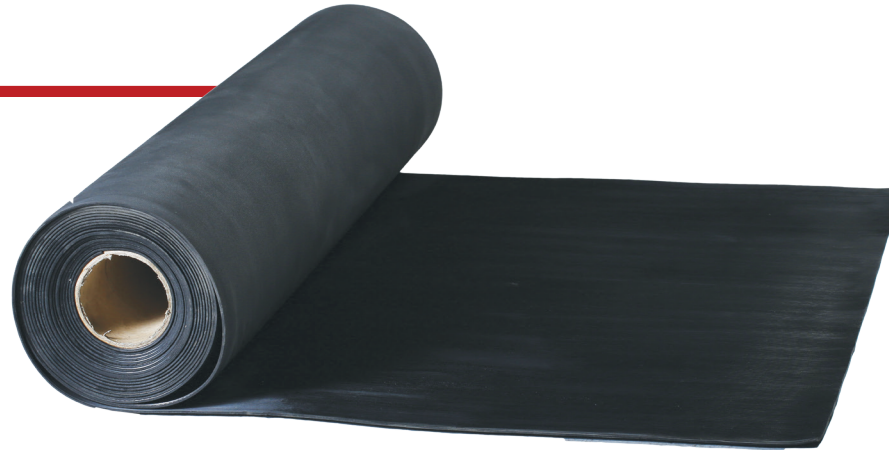
Rubber Dot Runner Mat - FKI11,
 Rubber Bubble Runner Mat - FKI12
 Rubber Ramp Runner Mat - FKI13,
 Rubber Hollow Runner Mat - FKI14
 Rubber Octagonal Runner Mat - FKI15
 Rubber Fingertip Runner Mat - FKI16

Product details

Colour : Black

Size: 1m x 1.5m x 10m

Custom Length Available



Features

- ≡ Gives the floor elegance and beauty
- ≡ Available in longer lengths
- ≡ Highly durable
- ≡ Resilience towards dirt and oils
- ≡ Excellent for wide spacing
- ≡ Multipurpose mats

Application

- ≡ Can be positioned along the corridors, foyers and entrances

Rubber Bubble Mat

For added comfort and relaxation

Product Code : FKI07

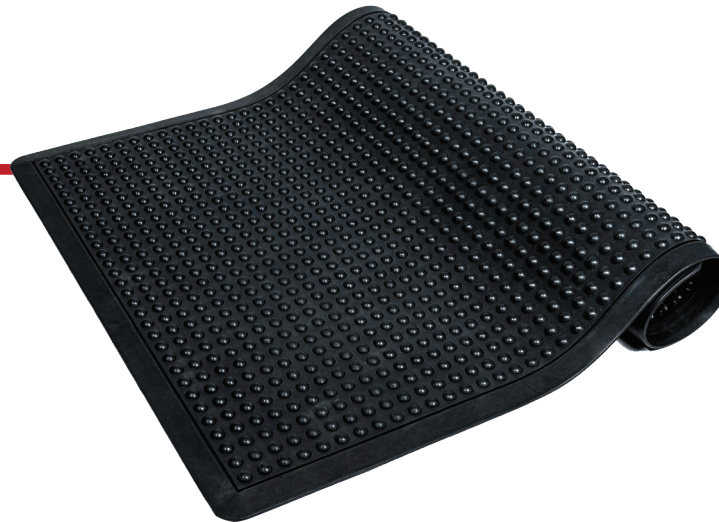
Product details

Colour : Black

Size: 60 cm x 90cm x 1.4 cm,

90 cm x 120 cm x 1.4 cm,

90 cm x 150 cm x 1.4 cm



Features

- ≡ Good surface texture that resists slipping.
- ≡ Highly durable and sturdy rubber matting
- ≡ Easy to clean
- ≡ Easy to install and manage
- ≡ High anti-skid property
- ≡ Relieves pain

Application

- ≡ Good surface texture that resists slipping.

Rubber Car Mat

For added comfort and relaxation

Product Code : FK118

Product details

Colour : Black

Size: Custom sizes and patterns available



Features

- ≡ Slip-Resistant Surface
- ≡ Easy to Clean
- ≡ Custom Fit and Trim
- ≡ Enhanced Floor Protection

Application

- ≡ Custom designed for automobiles

Excavator Stabiliser Rubber Pad

For floor protection from excavator foot

Product Code : FK117

Product details

Colour : Black

Size : Custom Size based on stabiliser foot sizes



Features

- ≡ High tensile compound used to withstand extreme load
- ≡ Designed for easy installation

Application

- ≡ Used in excavator stabilizer foot to protect the flooring below

Rubber Diamond Modular Mat

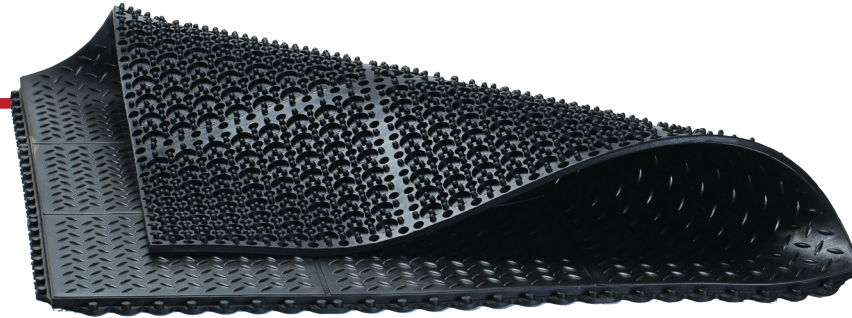
Add extra safety to your floors

Product Code : FKI10

Product details

Colour: Black

Size: 91 x 91 x 1.6 cm



Features

- ≡ Provides excellent grip
- ≡ Puzzle connectors enable advanced interlocking features
- ≡ Bevelled edges give extra safety
- ≡ High Durability
- ≡ High resistance towards impacts
- ≡ Suitable for all weather types

Application

- ≡ Comes in standard colours and has got excellent industrial applications

Rubber Solid Top Mat

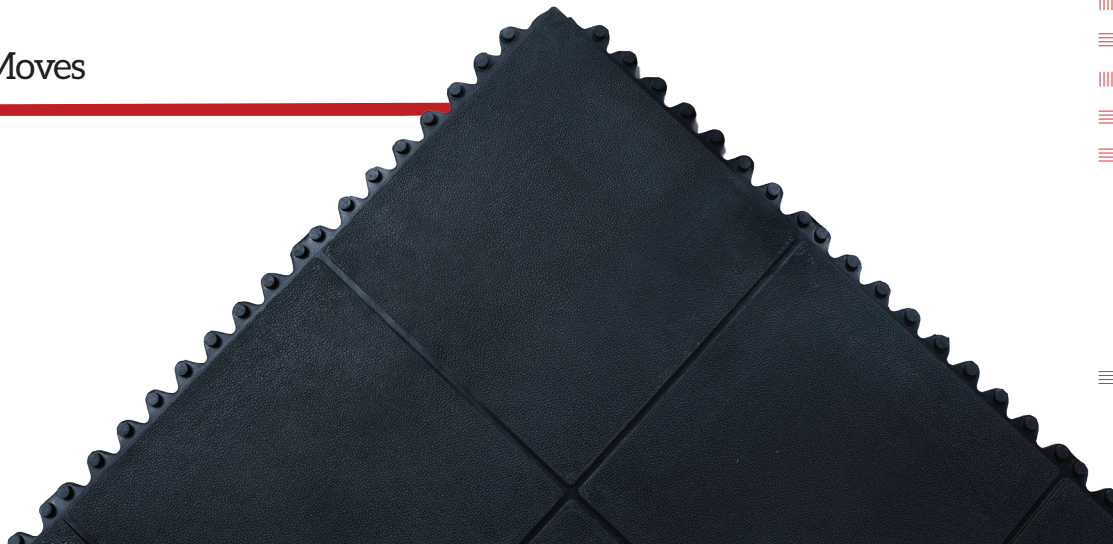
Solid Grip, Strong Moves

Product Code : FKI09

Product details

Colour: Black

Size: 90 x 90 x 1.6 cm



Features

- ≡ Provides deep comfort to legs
- ≡ Relieves pain from feet and ankles
- ≡ Improves work efficiency by giving comfort
- ≡ Ensures double safety
- ≡ High durability
- ≡ Highly resistant to impacts

Application

- ≡ Can be used both indoors and outdoors and both in home and office space



Dairy and Equine Flooring

Hexagonal Top Cow Mat

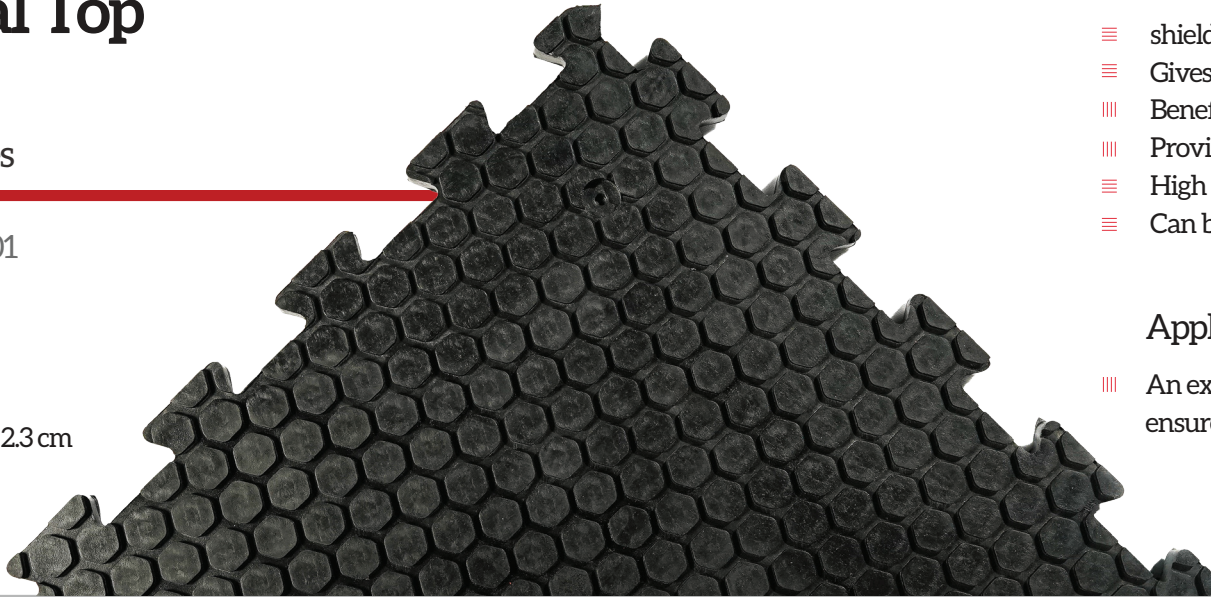
For cleaner spaces

Product Code : FDE01

Product details

Weight : 44 kg

Size : 120 cm x 180 cm x 2.3 cm



Features

- ≡ shield the animals from the chilly, hard floor
- ≡ Gives added comfort to the animals
- ≡ Beneficial for the joints of the cow
- ≡ Provides excellent traction
- ≡ High resistance towards impacts
- ≡ Can be used in a variety of settings

Application

- ≡ An excellent flooring solution for cows and ensures a safe and hygienic environment

Chequered Top Cow Mat

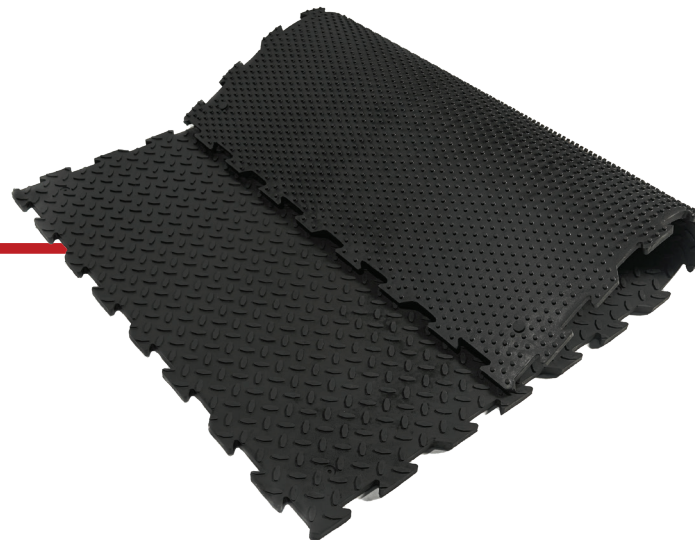
For an extra hygienic environment

Product Code : FDE02

Product details

Weight : 42 kg

Size : 120 cm x 180 cm x 2.3 cm



Features

- ≡ Provides excellent traction
- ≡ Slip resistance features
- ≡ Durable material
- ≡ Comfortable surface
- ≡ Resistance to wear and tear
- ≡ Easy to clean and disinfect

Application

- ≡ Excellent insulation features which provide safer and hygienic conditions for animals

Hammered top with Honeycomb Bottom

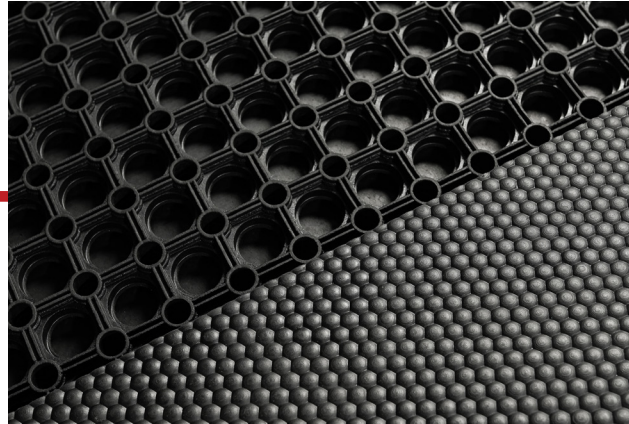
For extra comfort for animals

Product Code : FDE03

Product details

Weight : 44 kg

Size : 180 cm x 120 cm x 23 mm



Features

- ≡ Hammered surface provides extra traction
- ≡ Provides the cushioning effect
- ≡≡ Reduces pressure on cow's joints and legs
- ≡≡ Highly durable material
- ≡ Resistance towards wear and tear
- ≡ Provides a comfortable standing surface

Application

- ≡≡ Makes the shelters hygienic and clean and easy to install

Rubber Horse Walker Tiles

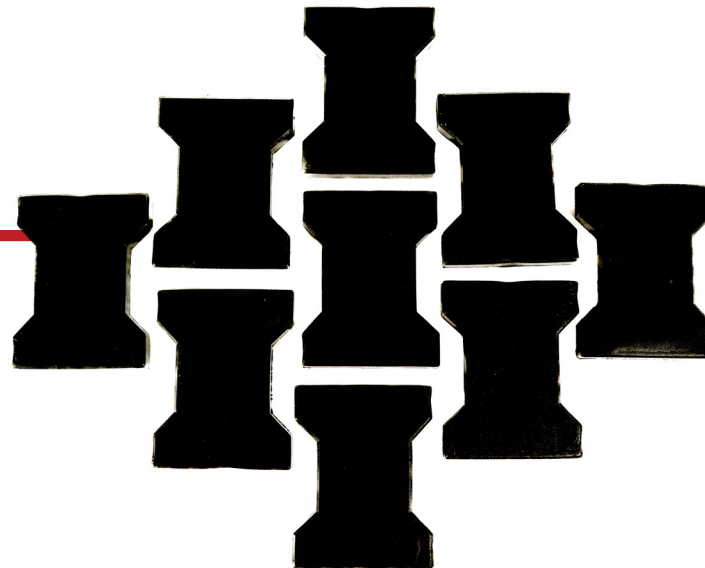
For a cleaner environment

Product Code : FDE08

Product details

Size : 20 cm x 16 cm x 4.5 cm

Colour: Black, Green, Terracota



Features

- ≡ Provides horses with a safe and confident walking surface.
- ≡ Improved shock absorption
- ≡≡ Available in different Colors

Application

- ≡ Suitable for installation of concrete, asphalt and existing pavings.

Mini Hexagonal Mat

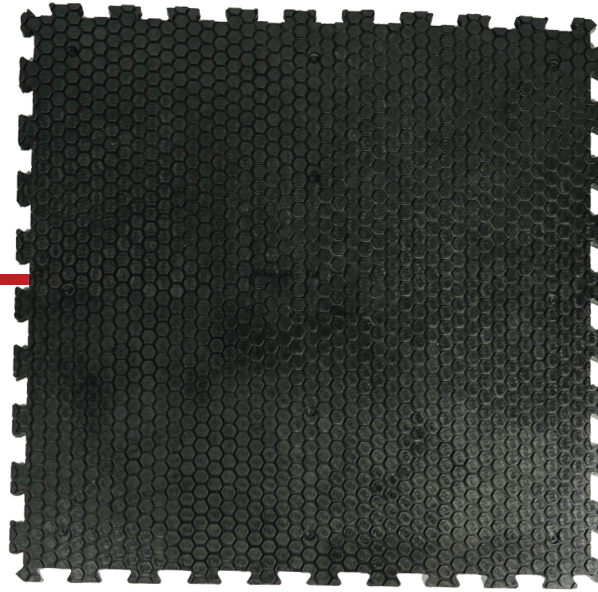
Make your small space cleaner and safer

Product Code : FDE05

Product details

Weight : 22 kg

Size : 100 cm x 100 cm x 2.2 cm



Features

- ≡ Hexagonal pattern provides excellent traction
- ≡ Highly durable material
- ≡ Provides a cushioned and comfortable surface
- ≡ Provides advanced insulation against cold floors
- ≡ Keep cows warm and comfortable
- ≡ Reduces the risk of injury, and fatigue on joints and legs

Application

- ≡ Excellent for limited space and easy to install and manage

Mini chequered Top Mat

For a highly comfortable surface

Product Code : FDE06

Product details

Weight : 22 kg

Size : 100 cm x 100 cm x 2.2 cm



Features

- ≡ The chequered pattern provides excellent traction
- ≡ Provides high slip resistance for cows
- ≡ Long-lasting material
- ≡ Impact resistant
- ≡ Provides highly comfortable surface for cows
- ≡ Interlocking edges ensure a secure and seamless fit

Application

- ≡ Easy to manage and disinfect and are highly fit for smaller spaces

Coin Top Mat

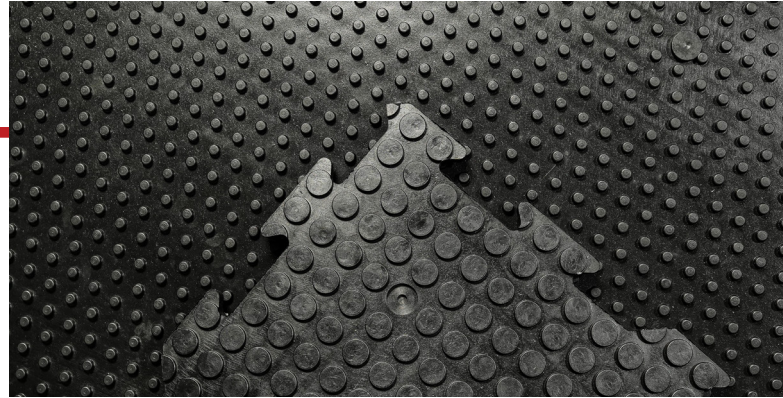
For a customized solution

Product Code : FDE07

Product details

Weight : 22 kg

Size : 100 cm x 100 cm x 2.2 cm



Features

- ≡ The coin top pattern provides good slip resistance
- |||| Highly durable
- |||| High resistance power against harsh chemicals, oils and solvents
- ≡ Easy to clean and manage
- |||| Highly resistant to mould and mildew
- ≡ Has sound-absorbing features

Application

- |||| Excellent for commercial and industrial settings and can be customized

Hammered Top Stable Mat

For a comfortable walking surface

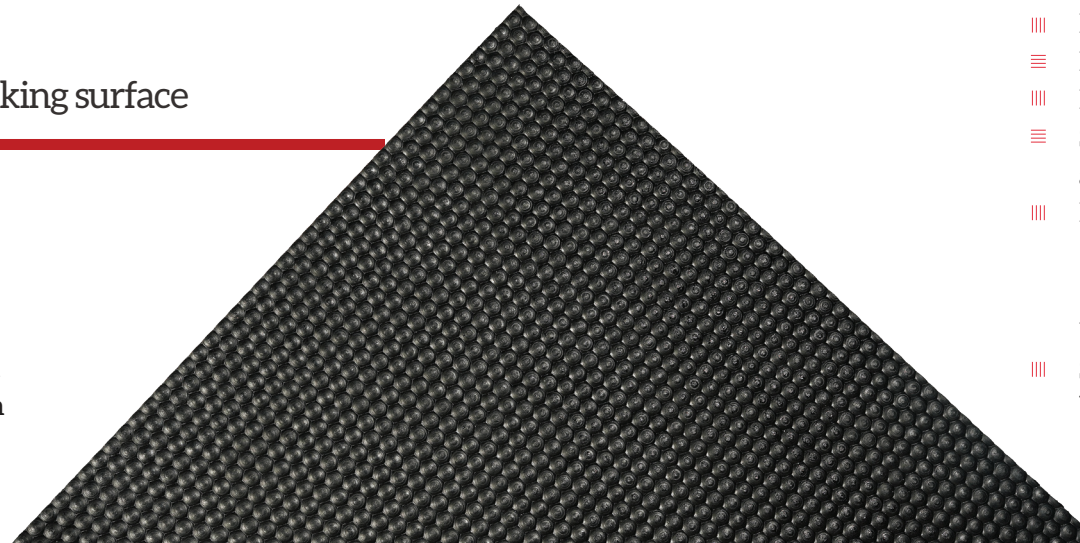
Product Code : FDE11

Product details

Weight : 27 kg, 36 kg

Size : 120 cm x 180 cm x 1.7cm

120 cm x 180 cm x 1.2 cm



Features

- ≡ Highly durable
- |||| High resistance against wear and tear
- ≡ High-impact resistance
- |||| Provides a comfortable surface for animals
- ≡ Sound-absorbing features provide a calmer environment
- |||| Easy to clean and manage

Application

- |||| Suitable for a variety of animal housing areas and can be cut to fit in any size or shape

Amoebic Top Stable Mat

Improve overall animal wellness

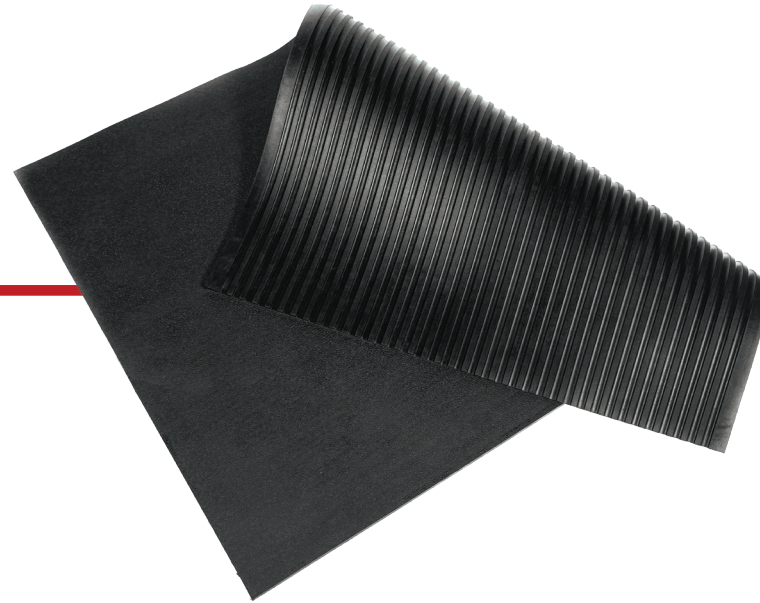
Product Code : FDE09

Product details

Weight : 36 kg, 27 kg

Size : 180 cm x 120 cm x 1.7cm

180 cm x 120 cm x 1.2 cm



Features

- ≡ The amoebic-shaped pattern provides a comfortable surface for animals
- ≡≡≡ Helps to reduce fatigue and improves the overall wellness of animals
- ≡ The textured surface provides excellent slip resistance
- ≡≡≡ High durability
- ≡ Ability to withstand contact with harsh chemicals
- ≡≡≡ Has got sound-absorbing features

Application

- ≡≡≡ Suitable for a variety of animal housing settings and can be customized according to the needs

Bubble Top stable Mat

For a calmer animal setting

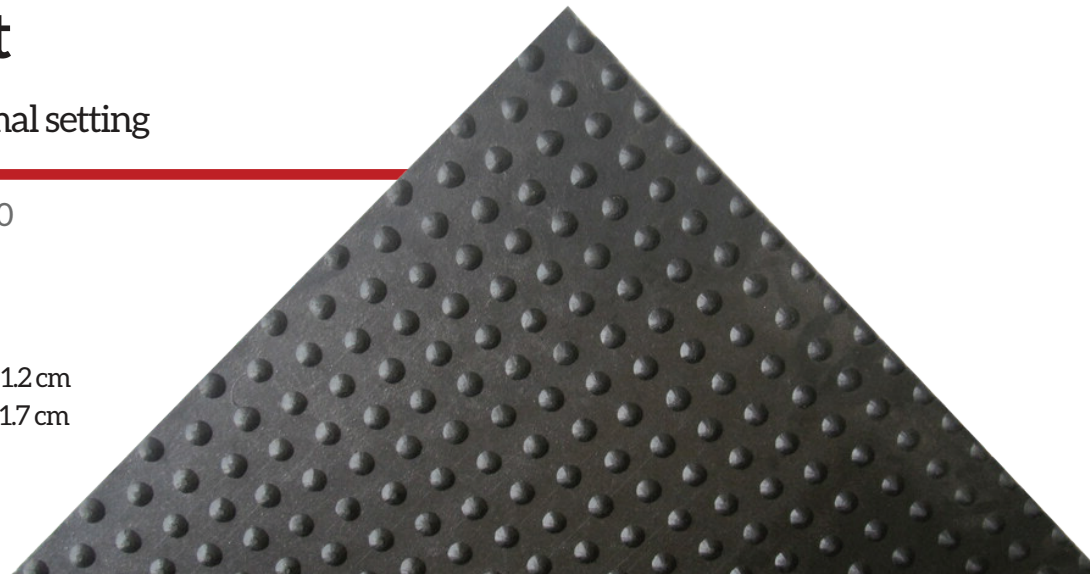
Product Code : FDE10

Product details

Weight : 27 kg, 36 kg

Size : 120 cm x 180 cm x 1.2 cm

120 cm x 180 cm x 1.7 cm



Features

- ≡ The bubble-shaped pattern provides a comfortable standing surface
- ≡≡≡ The textured surface provides a safer surface for animals to walk on
- ≡ High resistance against harsh chemicals and animal wastes
- ≡≡≡ Highly durable
- ≡ Easy to clean and manage
- ≡≡≡ Has got sound-absorbing features

Application

- ≡ Provides a calmer and less stressful setting for animals and can be customized according to the room

Rubber Slat Mat

For a cleaner environment

Product Code : FDE04

Product details

Size : 30 cm x 180 cm x 3 cm
114cm x 175 cm x 3cm
180 cm x 120 cm x 3 cm

Features

- ≡ Slat design allows urine and manure to pass through
- ≡ Keeps the surface clean and dry
- ≡ Highly durable material
- ≡ Resistant towards impacts
- ≡ Highly comfortable surface
- ≡ Easy to clean and disinfect

Application

- ≡ Easy to install and can be used in a variety of settings





Gym and Sports Flooring

Mini Power Gym Tiles

For heavy exercises and workouts

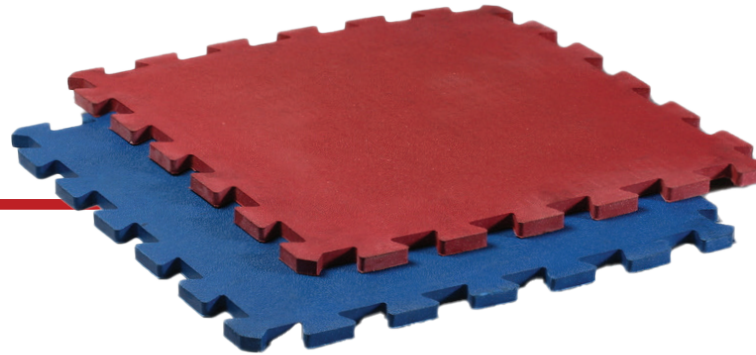
Product Code : FGS02

Product details

Colour : Black

Size : 50 cm x 50 cm x 0.8 cm Weight : 2 Kg

Size : 50 cm x 50 cm x 1.6 cm Weight : 4 Kg



Features

- ≡ High durability
- ≡ Made of high-quality materials
- ≡ Shock-absorbing features
- ≡ Provides a comfortable and safe surface
- ≡ Sound-absorbing features provide
- ≡ Non-slip ability
- ≡ Easy to install

Application

- ≡ Best suited for high-intensity workouts and weight lifting and is versatile

Coin Top Gym Mat

a saving hand from wet floors

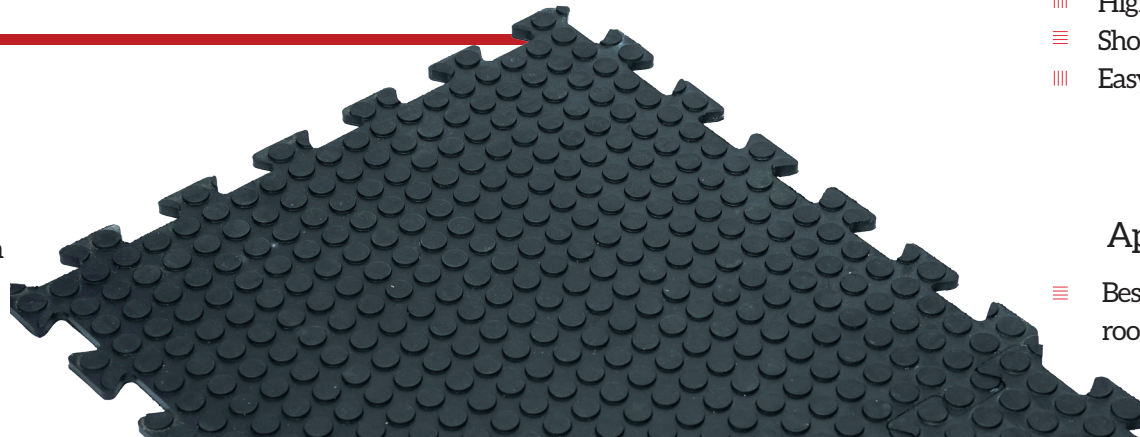
Product Code : FGS03

Product details

Colour : Black

Size : 50 cm x 50 cm x 0.8 cm

Weight : 2.5 Kg



Features

- ≡ The coin top texture provides a slip-free surface
- ≡ Provides a safe surface even when wet
- ≡ High durability
- ≡ High impact resistance
- ≡ Shock absorption features
- ≡ Easy to install and manage

Application

- ≡ Best suited to install in swimming pools, locker rooms and shower areas

Interlocking Gym Tiles

For a slip-free exercising

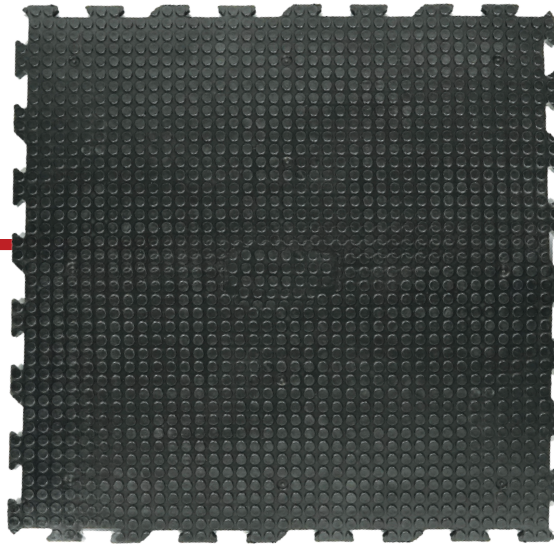
Product Code : FGS04

Product details

Colour : Black

Size : 100 cm x 100cm x 2.2 cm

weight : 22 kg



Features

- ≡ Highly durable
- ≡ Provides a non-slip surface
- ≡ Provides a seamless surface
- ≡ Easy to install and customize
- ≡ High impact resistance
- ≡ Provides a stable and safe surface

Application

- ≡ Suitable for a variety of fitness environments and applications

Rhino Tile Gym Mat

For a safe and comfortable workout surface

Product Code : FGS05

Product details

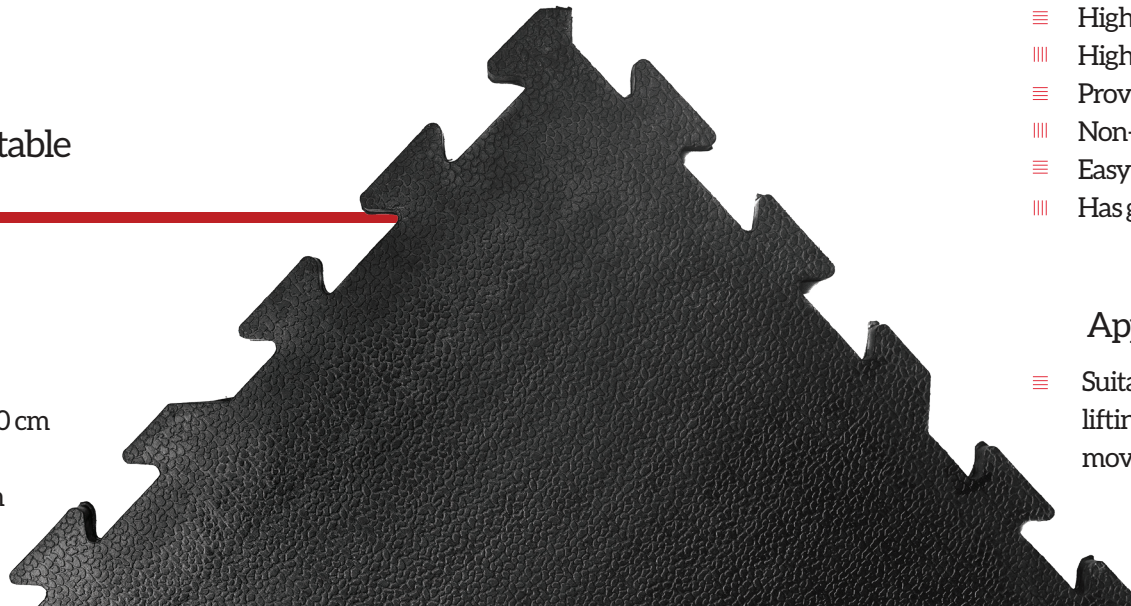
Colour : Black

Size : Size: 90 cm x 150 cm x 2.0 cm

Weight: 20 kg

Size: 100 cm x 100 cm x 1.6 cm

Weight : 16 Kg



Features

- ≡ Highly durable
- ≡ High impact-resistant power
- ≡ Provides a comfortable and safe surface
- ≡ Non-slip features
- ≡ Easy to install
- ≡ Has got shocked absorbing capacity

Application

- ≡ Suitable for high-intensity workouts and weight lifting and for exercises that involve high-impact movements

Rubber Crumb Tiles

For a clean and smooth surface

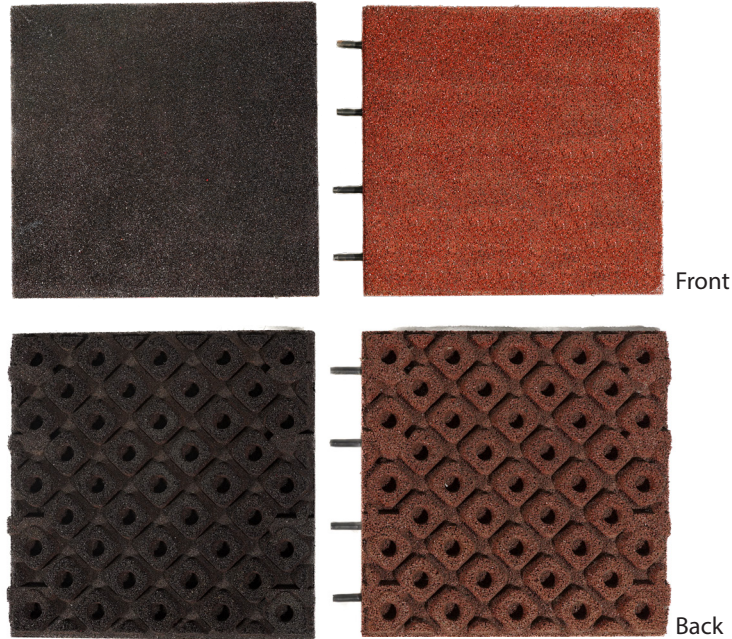
Product Code : FGS07

Product details

Colour : Custom colors available

Size : 60cm x 60cm

Weight - 4 Kg



Features

- ≡ Shock Absorption
- ≡ Noise and Vibration Reduction
- ≡ Enhanced Safety
- ≡ Durable

Application

- ≡ Suitable for various fitness facilities, including commercial gyms and strength training centers.

Solid Top Gym Mat

For a firm exercising surface

Product Code : FGS01

Product details

Colour : Black

Size : 90 cm x 90 cm x 1.6 cm

Weight : 9 kg



Features

- ≡ The single continuous layer of material provides a stable and firm surface
- ≡ Can withstand heavy use and abuse
- ≡ Highly durable
- ≡ Can absorb shock and reduce impacts
- ≡ Provides a comfortable and safe surface for exercises
- ≡ Easy to clean and handle

Application

- ≡ Can be customized to the need and comes in a variety of sizes, thicknesses and colours



Entrance Flooring

Door Mats

Keep the dust and dirt away

Product Code : FEF01

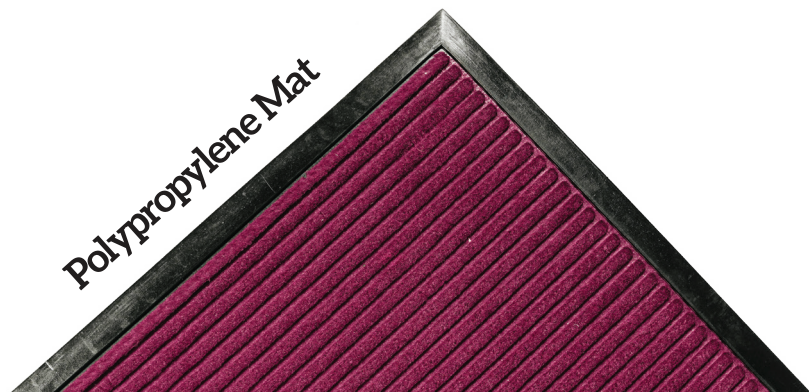
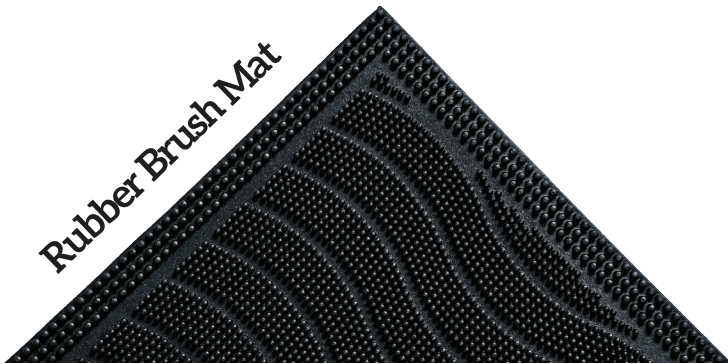
Customs designs & Sizes available

Features

- ≡ Collects dirt and debris
- ≡ Safeguards you from slipping and falling
- ≡ Adds an appealing touch to your entrance
- ≡ Contains anti-bacterial and anti-fungal chemicals
- ≡ High-quality, economical, and various designs
- ≡ Reduces the accumulation of unpleasant odour


Application

- ≡ Outdoors, indoors, gardens, offices, restaurants, hallways, home décor, lobby areas, hotels, and shopping malls.



Physical properties of Rubber Mats

SI No	Product Name	Hardness, shore A	Tensile strength, Kg/cm ² (min)	Elongation at Break ,% min	Abrasion Loss , mm ² (max)	Sspecific gravity, ±0.02
General Purpose Flooring						
FGP 01	Rubberised Carpet Mat	65±5	37-48	108-158	300	1.20
FGP 03	Rubber Octagonal Mat	60±5	25-30	100-125	400	1.16
FGP 04	Rubber Wave Mat	55±5	28-42	110-135	400	1.14
FGP 05	Rubber Fingertip Mat	65±5	37-48	108-158	300	1.20
FGP 06	Criss Cross Scrapper Mat	60±5	30-48	95-120	350	1.14
FGP 07	Ridge Scrapper Mat	60±5	30-48	95-120	350	1.14
FGP 02	Rubber Hollow Mat	55±5	25-40	110-140	450	1.16
Kitchen & Industrial Flooring						
FK102	Oil Resistant Beveled Edge Mat: Red	55±5	30-35	104-160	400	1.40
FK101	Rubber Bevelled Edge Mat: Black	55±5	20-30	118-140	400	1.16
FK105	Oil Resistant Restaurant Mat: Red	58±5	30-35	84-128	400	1.19
FK103	Rubber Restaurant Mat: Black	60±5	20-30	110-140	400	1.37
FK104	Oil Resistant Straight Edge Mat: Red	55±5	30-35	110-175	400	1.40
FK106	Rubber Straight Edge Mat: Black	60±5	20-30	85-132	300	1.16
FK107	Rubber Fingertip Mat	60±5	20-30	85-132	300	1.16
FK117	Escavator Stabiliser Foot Pad	60±5	20-30	85-132	300	1.16
FK118	Rubber Car Mat	60±5	20-30	85-132	300	1.16
FK109	Rubber Solid Top Mat	60±5	20-30	104-126	350	1.16
Dairy & Equine Flooring						
FDE01	Rubber Hexagonal Top Cow Mat	70±5	52-58	118-127	210	1.18
FDE02	Rubber Chequered Top Cow Mat	70±5	55-72	150-200	190	1.19
FDE03	Hammered Top Cow Mats	55±5	29-33	100-122	500	1.15
FDE08	Rubber Horse Walker Tiles	70±5	55-72	150-200	190	1.19
FDE05	Mini Hexagonal Mat	70±5	46-62	130-155	225	1.19
FDE06	Mini Chequered Top Mat	70±5	46-62	130-155	225	1.19
FDE07	Coin Top Mat	70±5	46-62	130-155	225	1.19
FDE09	Amoebic Top Stable Mat	65±5	38-42	85-100	400	1.21
FDE10	Bubble Top Stable Mat	60±5	30-38	90-120	460	1.19
FDE04	Rubber Slat Mat	60±5	39-52	180-200	250	1.15
Gym & Sports Flooring						
FGS02	Mini Power Gym Tiles	60±5	35-40	118-	500	1.18
FGS03	Coin Top Gym Mat	60±5	35-40	118-	500	1.18
FGS04	Interlocking Gym Tiles	65±5	33-35	100-114	400	1.18
FGS05	Rhino Tile Gym Mat	65±5	30-35	100-115	425	1.17
FK109	Rubber Solid Top Mat	60±5	21-25	104-126	350	1.16



INDIA (HEAD OFFICE)

VIKAS RUBBERS

2/106 A, THALAPPADY

RUBBER BOARD PO KOTTAYAM - 686009

KERALA, INDIA

MOB: +91 96450 05044

WEBSITE: WWW.VIKASRUBBERMATS.COM

EMAIL: INFO@VIKASRUBBERMATS.COM

UNITED KINGDOM

VIKAS POLYMERS LTD

1349-1353 LONDON ROAD

LEIGH-ON-SEA, ESSEX SS9 2AB,

UNITED KINGDOM

INDIA

FLOORMATE RUBBER PRODUCTS(P) LTD.

2/106 B, THALAPPADY

RUBBER BOARD P.O KOTTAYAM - 686009

KERALA, INDIA

MOB: +91 96450 05044

WEBSITE: WWW.FLOORMATERUBBERMATS.CO.UK

EMAIL: INFO@FLOORMATERUBBER.COM